

Poringland Primary School and Nursery

Complaints Procedure

Date of Policy: January 2026
Review Date: September 2026

Members of staff responsible: Senior Leadership Team

This complaints procedure is intended to set out how Poringland Primary School and Nursery will deal with complaints from parents, pupils and the public, who should feel able to express their views knowing that they will be dealt with fairly.

Unless complaints are dealt with under separate statutory procedures (see Appendix 1), we will use this complaints procedure.

Aims

This policy aims to provide parents, pupils and the public with an accessible and easily understood procedure for complaints. The school would encourage parents, and pupils to express their views at the earliest opportunity through the appropriate channels as defined within this policy. Parents should be assured that making a complaint will not adversely affect their child.

The school will try to resolve every concern, difficulty or complaint in a positive way; it expects all parties involved in a complaints procedure to behave in a calm, civil and reasonable manner. The school will not tolerate unacceptable behaviour and will take action to protect staff from that behaviour, including that which is abusive, offensive or threatening.

This policy also sets out how the school will deal with serial, vexatious and unreasonable complaints.

Resolving complaints

At each stage in the procedure, Poringland Primary School and Nursery wants to resolve the complaint. If appropriate, we will acknowledge that the complaint is upheld in whole or in part. In addition, we may offer one or more of the following:

- an explanation
- an admission that the situation could have been handled differently or better
- an assurance that we will try to ensure the event complained of will not recur
- an explanation of the steps that have been or will be taken to help ensure that it will not happen again and an indication of the timescales within which any changes will be made
- an undertaking to review school policies in light of the complaint
- an apology.

Financial compensation is not a possible outcome at any stage of this policy and none of the above will constitute an admission of negligence or acceptance of liability.

The difference between a concern and a complaint

A concern may be defined as 'an expression of worry or doubt over an issue considered to be important for which reassurances are sought'.

A complaint may be defined as 'an expression of dissatisfaction however made, about actions taken or a lack of action'.

Procedure

It is in everyone's interest that concerns and complaints are resolved at the earliest possible stage. Many issues can be resolved informally, without the need to use the formal stages of the complaints procedure and the expectation is that they should be dealt with informally under Stage 1 in the first instance.

The majority of staff have full teaching timetables and therefore may not be able to respond to email or telephone queries immediately. While it is acceptable to talk to your child's class teacher at the beginning or end of the day, or call in at the office, all complaints/concerns/queries communicated via telephone or email should be **directed to the school office and not the specific member of staff to ensure that the query is addressed promptly.**

A concern or complaint can be made in person, in writing or by telephone. They may also be made by a third party acting on behalf on a complainant, as long as they have appropriate consent to do so. The Headteacher has the authority to delegate the handling of any complaint or concern to another member of staff as appropriate.

In accordance with equality law, we will consider making reasonable adjustments if required, to enable complainants to access and complete this complaints procedure. For instance, providing information in alternative formats, assisting complainants in raising a formal complaint or holding meetings in accessible locations.

Complainants should not approach individual governors to raise concerns or complaints. They have no power to act on an individual basis and it may also prevent them from considering complaints at Stage 4 of the procedure.

Complaints against school staff (except the Headteacher) should be made in the first instance, to the Headteacher **via the school office**. Please mark them as **Private and Confidential**.

Complaints that involve or are about the Headteacher should be addressed to the Chair of Governors, **via the school office**. Please mark them as **Private and Confidential**.

Complaints about the Chair of Governors, any individual governor or the whole governing body should be addressed to the Clerk to the Governing Body **via the school office**. Please mark them as **Private and Confidential**.

For ease of use, a template complaint form is included at the end of this procedure (Appendix 2). If you require help in completing the form, please contact the school office. You can also ask third party organisations like the Citizens Advice to help you.

Complaint Campaigns

In the event the school receives multiple complaints/concerns based on the same subject, regardless of whether they are from those connected or un-connected with the school, we will respond in the following way:

- either sending a template response to all complainants or,
- publishing a single response on the school's website.

You may signpost your concerns/complaints to DfE if you are unsatisfied about this (see page 5 for details of how to do this).

Anonymous complaints

We will not normally investigate anonymous complaints. However, the Executive Headteacher or Chair of Governors, if appropriate, will determine whether the complaint warrants an investigation.

Time scales

You must raise the complaint within three months of the incident or, where a series of associated incidents have occurred, within three months of the last of these incidents. We will consider complaints made outside of this time frame if exceptional circumstances apply. All days within this policy refer to school days and do not include school holidays, public holidays or weekends.

Complaints received outside of term time

We will consider complaints made outside of term time to have been received on the first school day after the holiday period.

Withdrawal of a Complaint

If a complainant wants to withdraw their complaint, we will ask them to confirm this in writing.

Written Records

A written record of all complaints will be kept, stating:

- whether they are resolved following a formal process or proceed to a hearing
- action taken by the school as a result of those complaints.

Stage 1 - Raising a Concern/Informal Complaint

In most instances, concerns or complaints should be raised with the class teacher. Except in minor matters, the concern and any action taken will be logged in the school's files.

If the teacher/member of staff cannot deal with the concern, they will refer the matter to an appropriate member of the Senior Leadership Team.

In certain circumstances, the Headteacher may personally decide to deal with concerns informally under this stage.

If the issue remains unresolved, the next step is to contact the Key Stage Lead or Deputy Headteacher, **via the school office**, to discuss the concern/complaint under Stage 2.

Stage 2 – Escalating a Concern

It is always best to resolve issues informally at the earliest possible time but if the person is not satisfied with the result of the informal talk with the member of staff within Stage 1 then he/she can ask for an appointment to meet with a member of the Leadership Team (a Key Stage Leader or the Deputy Headteacher). They will contact you within 3 working days to arrange this.

The aim should be that discussions end on a positive note with no bad feeling.

The member of the Leadership Team will write to you, summarising what has been agreed regarding the issue within the meeting within 5 working days of the meeting.

It is hoped that most problems will have been resolved by now. If the issue remains unresolved, the next step is to make a formal complaint under Stage 3.

Stage 3 – Formal Complaints

Formal complaints must be made to the Headteacher (unless they are about the Headteacher), **via the school office**. This may be done in writing (preferably on the Complaint Form – Appendix 2), or by telephone and should include information about the steps taken under Stages 1 and 2 to resolve the complaint (if applicable).

The Headteacher will record the date the complaint is received and will acknowledge receipt of the complaint in writing (either by letter or email) within 5 school days.

Within this acknowledgement, the Headteacher will seek to clarify the nature of the complaint and may ask what remains unresolved/what outcome the complainant would like to see. The Headteacher can consider whether a face-to-face meeting is the most appropriate way of doing this, but does not have to do this.

Note: The Headteacher may delegate the investigation to another member of the school's senior leadership team but not the decision to be taken.

During the investigation, the Headteacher (or investigator) will:

- if necessary, interview those involved in the matter and/or those complained of, allowing them to be accompanied if they wish
- keep a written record of any meetings/interviews in relation to their investigation.

At the conclusion of their investigation, the Headteacher will provide a formal written response within 15 school days of the date of receipt of the complaint.

If the Headteacher is unable to meet this deadline, they will provide the complainant with an update and revised response date.

The response will detail any actions taken to investigate the complaint and provide a full explanation of the decision made and the reason(s) for it. Where appropriate, it will include details of actions the school will take to resolve the complaint.

The Headteacher will advise the complainant of how to escalate their complaint should they remain dissatisfied with the outcome of Stage 3.

If the complaint is about the Headteacher, or a member of the governing body (including the Chair or Vice-Chair), a suitably skilled governor will be appointed to complete all the actions at Stage 3.

Complaints about the Headteacher or member of the governing body must be made to the Clerk, **via the school office**.

If the complaint is:

- jointly about the Chair and Vice Chair or
- the entire governing body or
- the majority of the governing body,

Stage 3 will be considered by an independent investigator appointed by the governing body. At the conclusion of their investigation, the independent investigator will provide a formal written response.

Stage 4

If the complainant is dissatisfied with the outcome at Stage 3 and wishes to take the matter further, they can escalate the complaint to Stage 4 – a meeting with members of the governing body's complaints committee, which will be formed of the first three, impartial, governors available. This is the final stage of the complaints procedure.

A request to escalate to Stage 4 must be made to the Clerk, **via the school office**, within 5 school days of receipt of the Stage 3 response.

The Clerk will record the date the complaint is received and acknowledge receipt of the complaint in writing (either by letter or email) within 5 school days.

Requests received outside of this time frame will only be considered if exceptional circumstances apply.

The Clerk will write to the complainant to inform them of the date of the meeting. They will aim to convene a meeting within 15 school days of receipt of the Stage 4 request. If this is not possible, the Clerk will provide an anticipated date and keep the complainant informed.

If the complainant rejects the offer of three proposed dates, without good reason, the Clerk will decide when to hold the meeting. It will then proceed in the complainant's absence on the basis of written submissions from both parties.

The complaints committee will consist of at least three governors with no prior involvement or knowledge of the complaint. Prior to the meeting, they will decide amongst themselves who will act as the Chair of the Complaints Committee. If there are fewer than three governors from Poringland Primary School and Nursery available, the Clerk will source any additional, independent governors through another local school or through the LA's Governor Services team, in order to make up the committee. Alternatively, an entirely independent committee may be convened to hear the complaint at Stage 4.

The committee will decide whether to deal with the complaint by inviting parties to a meeting or through written representations, but in making their decision they will be sensitive to the complainant's needs.

If the complainant is invited to attend the meeting, they may bring someone along to provide support. This can be a relative or friend. Generally, we do not encourage either party to bring legal representatives to the committee meeting. However, there may be occasions when legal representation is appropriate. For instance, if a school employee is called as a witness in a complaint meeting, they may wish to be supported by union and/or legal representation.

Note: Complaints about staff conduct will not generally be handled under this complaints procedure. Complainants will be advised that any staff conduct complaints will be considered under staff disciplinary procedures, if appropriate, but outcomes will not be shared with them. Representatives from the media are not permitted to attend.

At least 5 school days before the meeting, the Clerk will:

- confirm and notify the complainant of the date, time and venue of the meeting, ensuring that, if the complainant is invited, the dates are convenient to all parties and that the venue and proceedings are accessible
- request copies of any further written material to be submitted to the committee at least 3 school days before the

meeting.

Any written material will be circulated to all parties at least 2 school days before the date of the meeting. The committee will not normally accept, as evidence, recordings of conversations that were obtained covertly and without the informed consent of all parties being recorded.

The committee will also not review any new complaints at this stage or consider evidence unrelated to the initial complaint to be included. New complaints must be dealt with from Stage 1 of the procedure.

The meeting will be held in private. Electronic recordings of meetings or conversations are not normally permitted unless a complainant's own disability or special needs require it. Prior knowledge and consent of all parties attending must be sought before meetings or conversations take place. Consent will be recorded in any minutes taken.

The committee will consider the complaint and all the evidence presented. The committee can:

- uphold the complaint in whole or in part
- dismiss the complaint in whole or in part.

If the complaint is upheld in whole or in part, the committee will:

- decide on the appropriate action to be taken to resolve the complaint
- where appropriate, recommend changes to the school's systems or procedures to prevent similar issues in the future.

The Chair of the Committee will provide the complainant and Poringland Primary School and Nursery with a full explanation of their decision and the reason(s) for it, in writing, within 10 school days.

The letter to the complainant will include details of how to contact the Department for Education if they are dissatisfied with the way their complaint has been handled by Poringland Primary School and Nursery.

If the complaint is:

- jointly about the Chair and Vice Chair or
- the entire governing body or
- the majority of the governing body

Stage 4 will be heard by a committee of independent governors.

The response will detail any actions taken to investigate the complaint and provide a full explanation of the decision made and the reason(s) for it. Where appropriate, it will include details of actions Poringland Primary School and Nursery will take to resolve the complaint.

The response will also advise the complainant of how to escalate their complaint should they remain dissatisfied.

Next Steps

If the complainant believes the school did not handle their complaint in accordance with the published complaints procedure or they acted unlawfully or unreasonably in the exercise of their duties under education law, they can contact the Department for Education after they have completed Stage 4.

The Department for Education will not normally reinvestigate the substance of complaints or overturn any decisions made by Poringland Primary School and Nursery. They will consider whether Poringland Primary School and Nursery has adhered to education legislation and any statutory policies connected with the complaint.

The complainant can refer their complaint to the Department for Education online at:

www.education.gov.uk/contactus, by telephone on: 0370 000 2288 or by writing to:

Department for Education
Piccadilly Gate
Store Street
Manchester
M1 2WD

Managing Serial and Unreasonable Complaints

Poringland Primary School and Nursery is committed to dealing with all complaints fairly and impartially, and to providing a high quality service to those who complain. We will not normally limit the contact complainants have with our school. However, we do not expect our staff to tolerate unacceptable behaviour and will take action to protect staff from that behaviour, including that which is abusive, offensive or threatening.

Poringland Primary School and Nursery defines unreasonable behaviour as that which hinders our consideration of complaints because of the frequency or nature of the complainant's contact with the school, such as, but not exclusively, if the complainant:

- refuses to articulate their complaint or specify the grounds of a complaint or the outcomes sought by raising the complaint, despite offers of assistance
- refuses to co-operate with the complaints process
- refuses to co-operate with the complaints investigation process
- refuses to accept that certain issues are not within the scope of the complaints procedure
- insists on the complaint being dealt with in ways which are incompatible with the complaints procedure or with good practice
- introduces trivial or irrelevant information which they expect to be taken into account and commented on
- raises large numbers of detailed but unimportant questions, and insists they are fully answered, often immediately and to their own timescales
- makes unjustified complaints about staff who are trying to deal with the issues, and seeks to have them replaced
- changes the basis of the complaint as the investigation proceeds
- repeatedly makes the same complaint (despite previous investigations or responses concluding that the complaint is groundless or has been addressed)
- refuses to accept the findings of the investigation into that complaint where the school's complaint procedure has been fully and properly implemented and completed including referral to the Department for Education
- seeks an unrealistic outcome
- makes excessive demands on school time by frequent, lengthy and complicated contact with staff regarding the complaint in person, in writing, by email and by telephone while the complaint is being dealt with
- refuses to raise the complaint in the manner outlined within this policy
- uses threats to intimidate
- uses abusive, offensive or discriminatory language or violence
- knowingly provides falsified information
- publishes unacceptable information on social media or other public forums.

Complainants should try to limit their communication with the school that relates to their complaint while the complaint is being progressed. It is not helpful if repeated correspondence is sent (either by letter, phone, email or text), as it could delay the outcome being reached.

Whenever possible, the Headteacher or Chair of Governors will discuss any concerns with the complainant informally before applying an '*unreasonable*' marking.

If the behaviour continues, the Headteacher will write to the complainant explaining that their behaviour is unreasonable and ask them to change it. For complainants who excessively contact Poringland Primary School and Nursery causing a significant level of disruption, we may specify methods of communication and limit the number of contacts in a communication plan. This will be reviewed after six months.

In response to any serious incident of aggression or violence, we will immediately inform the police and communicate our actions in writing. This may include barring an individual from Poringland Primary School and Nursery.

Agreed by Governors: 2nd October 2025

Reviewed: January 2026

Next Review:

Appendix 1

Scope of this Complaints Procedure

This procedure covers all complaints about any provision of community facilities or services by Poringland Primary School and Nursery, other than complaints that are dealt with under other statutory procedures, including those listed below.

Exceptions	Who to contact
<ul style="list-style-type: none"> Admissions to schools Statutory assessments of Special Educational Needs School re-organisation proposals 	Concerns about admissions, statutory assessments of Special Educational Needs, or school re-organisation proposals should be raised with Norfolk County Council.
<ul style="list-style-type: none"> Matters likely to require a Child Protection Investigation 	<p>Complaints about child protection matters are handled under our child protection and safeguarding policy and in accordance with relevant statutory guidance.</p> <p>If you have serious concerns, you may wish to contact the local authority designated officer (LADO) who has local responsibility for safeguarding or the Multi-Agency Safeguarding Hub (MASH) 0344 800 8020.</p>
<ul style="list-style-type: none"> Exclusion of children from school* 	<p>Further information about raising concerns about exclusion can be found at: www.gov.uk/school-discipline-exclusions/exclusions.</p> <p>*complaints about the application of the behaviour policy can be made through the school's complaints procedure.</p>
<ul style="list-style-type: none"> Whistleblowing 	<p>We have an internal whistleblowing procedure for all our employees, including temporary staff and contractors.</p> <p>The Secretary of State for Education is the prescribed person for matters relating to education for whistleblowers in education who do not want to raise matters direct with their employer. Referrals can be made at: www.education.gov.uk/contactus.</p> <p>Volunteer staff who have concerns about our school should complain through the school's complaints procedure. You may also be able to complain direct to the LA or the Department for Education (see link above), depending on the substance of your complaint.</p>
<ul style="list-style-type: none"> Staff grievances 	Complaints from staff will be dealt with under the school's internal grievance procedures.
<ul style="list-style-type: none"> Staff conduct 	<p>Complaints about staff will be dealt with under the school's internal disciplinary procedures, if appropriate.</p> <p>Complainants will not be informed of any disciplinary action taken against a staff member as a result of a complaint. However, the complainant will be notified that the matter is being addressed.</p>
<ul style="list-style-type: none"> Complaints about services provided by other providers who may use school premises or facilities 	Providers should have their own complaints procedure to deal with complaints about service. Please contact them direct.
<ul style="list-style-type: none"> National Curriculum - content 	Please contact the Department for Education at: www.education.gov.uk/contactus

If other bodies are investigating aspects of the complaint, for example the police, local authority (LA) safeguarding teams or Tribunals, this may impact on our ability to adhere to the timescales within this procedure or result in the procedure being suspended until those public bodies have completed their investigations.

If a complainant commences legal action against Poringland Primary School and Nursery in relation to their complaint, we will consider whether to suspend the complaints procedure in relation to their complaint until those legal proceedings have concluded.

Appendix 2 - Complaint Form

Please complete and return to the Headteacher, **via the school office** of your child's school, who will acknowledge receipt and explain what action will be taken.

Your name:
Pupil's name (if relevant):
Your relationship to the pupil (if relevant):
Address:
Postcode:
Day time telephone number:
Evening telephone number:
Please give details of your complaint, including whether you have spoken to anybody at the school about it under stages 1 and 2.

What actions do you feel might resolve the problem at this stage?

Are you attaching any paperwork? If so, please give details.

Signature:

Date:

Official use

Date acknowledgement sent:

By who:

Complaint referred to:

Date:

Appendix 3

Roles and Responsibilities

Complainant

The complainant will receive a more effective response to the complaint if they:

- explain the complaint in full as early as possible
- ensure that the complaint is submitted via the school office
- co-operate with the school in seeking a solution to the complaint
- respond promptly to requests for information or meetings or in agreeing the details of the complaint
- ask for assistance as needed
- treat all those involved in the complaint with respect
- refrain from publicising the details of their complaint on social media and respect confidentiality.

Investigator

The investigator's role is to establish the facts relevant to the complaint by:

- providing a comprehensive, open, transparent and fair consideration of the complaint through:
 - sensitive and thorough interviewing of the complainant to establish what has happened and who has been involved
 - interviewing staff and children/young people and other people relevant to the complaint
 - consideration of records and other relevant information
 - analysing information
- liaising with the complainant and the complaints co-ordinator as appropriate to clarify what the complainant feels would put things right.

The investigator should:

- conduct interviews with an open mind and be prepared to persist in the questioning
- keep notes of interviews or arrange for an independent note taker to record minutes of the meeting
- ensure that any papers produced during the investigation are kept securely pending any appeal
- be mindful of the timescales to respond
- prepare a comprehensive report for the Headteacher or complaints committee that sets out the facts, identifies solutions and recommends courses of action to resolve problems.

The Headteacher or complaints committee will then determine whether to uphold or dismiss the complaint and communicate that decision to the complainant, providing the appropriate escalation details.

Complaints Co-ordinator (this could be the Headteacher / designated complaints governor or other staff member providing administrative support)

The complaints co-ordinator should:

- ensure that the complainant is fully updated at each stage of the procedure
- liaise with staff members, Headteacher, Chair of Governors, Clerk and LAs (if appropriate) to ensure the smooth running of the complaints procedure
- be aware of issues regarding:

- sharing third party information
- additional support. This may be needed by complainants when making a complaint including interpretation support or where the complainant is a child or young person
- keep records.

Clerk to the Governing Body

The Clerk is the contact point for the complainant and the committee and should:

- ensure that all people involved in the complaint procedure are aware of their legal rights and duties, including any under legislation relating to school complaints, education law, the Equality Act 2010, the Freedom of Information Act 2000, the Data Protection Act (DPA) 2018 and the General Data Protection Regulations (GDPR)
- set the date, time and venue of the meeting, ensuring that the dates are convenient to all parties (if they are invited to attend) and that the venue and proceedings are accessible
- collate any written material relevant to the complaint (for example; stage 1 paperwork, school and complainant submissions) and send it to the parties in advance of the meeting within an agreed timescale
- record the proceedings
- circulate the minutes of the meeting
- notify all parties of the committee's decision.

Committee Chair

The committee's chair, who is nominated in advance of the complaint meeting, should ensure that:

- both parties are asked (via the Clerk) to provide any additional information relating to the complaint by a specified date in advance of the meeting
- the meeting is conducted in an informal manner, is not adversarial, and that, if all parties are invited to attend, everyone is treated with respect and courtesy
- complainants who may not be used to speaking at such a meeting are put at ease. This is particularly important if the complainant is a child/young person
- the remit of the committee is explained to the complainant
- written material is seen by everyone in attendance, provided it does not breach confidentiality or any individual's rights to privacy under the DPA 2018 or GDPR

If a new issue arises it would be useful to give everyone the opportunity to consider and comment upon it; this may require a short adjournment of the meeting

- both the complainant and the school are given the opportunity to make their case and seek clarity, either through written submissions ahead of the meeting or verbally in the meeting itself
- the issues are addressed
- key findings of fact are made
- the committee is open-minded and acts independently
- no member of the committee has an external interest in the outcome of the proceedings or any involvement in an earlier stage of the procedure
- the meeting is minuted
- they liaise with the Clerk (and complaints co-ordinator, if the school has one).

Committee Member

Committee members should be aware that:

- the meeting must be independent and impartial, and should be seen to be so

No governor may sit on the committee if they have had a prior involvement in the complaint or in the circumstances surrounding it.

- the aim of the meeting should be to resolve the complaint and achieve reconciliation between the school and the complainant

We recognise that the complainant might not be satisfied with the outcome if the meeting does not find in their favour. It may only be possible to establish the facts and make recommendations.

- many complainants will feel nervous and inhibited in a formal setting

Parents/carers often feel emotional when discussing an issue that affects their child.

- extra care needs to be taken when the complainant is a child/young person and present during all or part of the meeting

Careful consideration of the atmosphere and proceedings should ensure that the child/young person does not feel intimidated.

The committee should respect the views of the child/young person and give them equal consideration to those of adults.

If the child/young person is the complainant, the committee should ask in advance if any support is needed to help them present their complaint. Where the child/young person's parent is the complainant, the committee should give the parent the opportunity to say which parts of the meeting, if any, the child/young person needs to attend.

However, the parent should be advised that agreement might not always be possible if the parent wishes the child/young person to attend a part of the meeting that the committee considers is not in the child/young person's best interests.

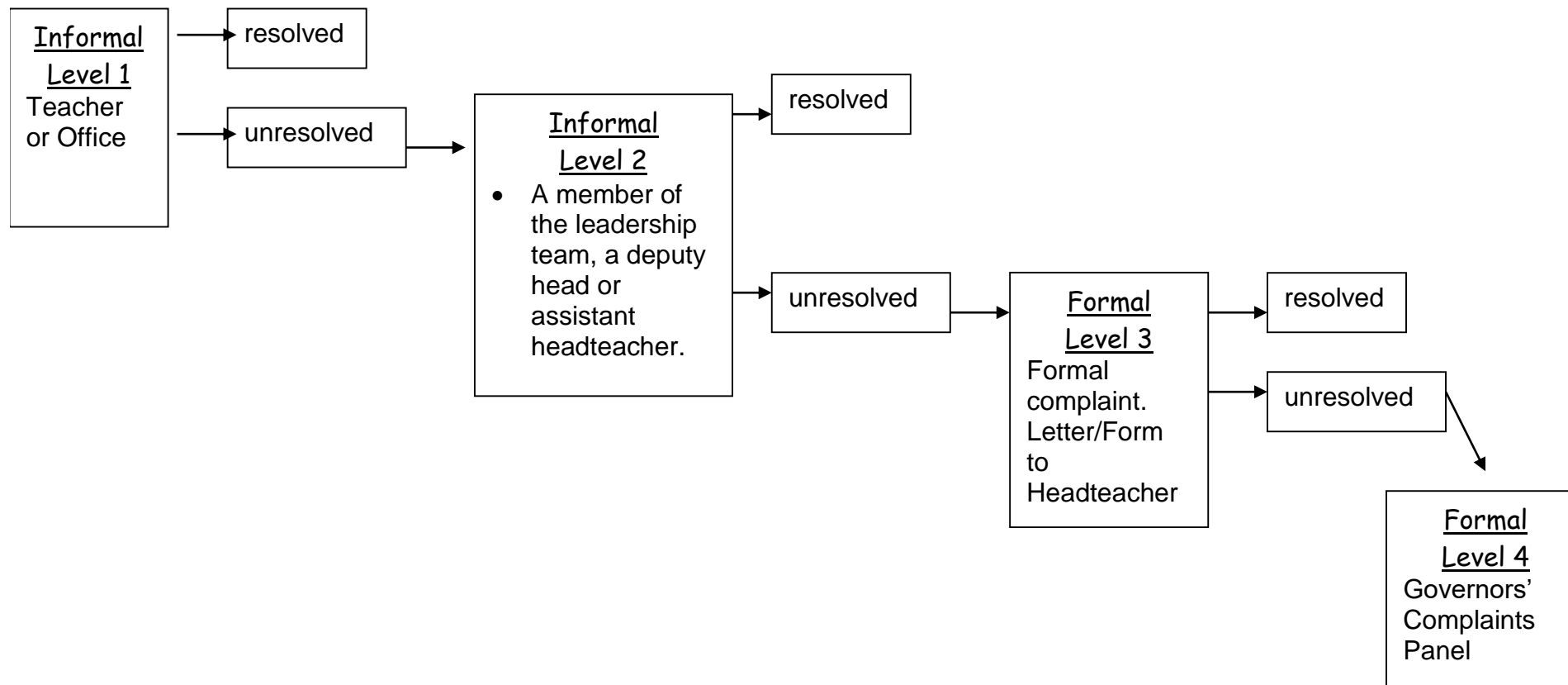
- the welfare of the child/young person is paramount.

Appendix 4

Table outlining who deals with each stage of your complaint

Complaint is about:	Stage 1	Stage 2	Stage 3 - Formal	Stage 4
General issue, policy, procedure and practice	Relevant member of staff, ie class teacher/school office	Key Stage Lead or Deputy Headteacher via the School Office	Headteacher – via Complaints Form to the School Office	Chair Of Governors via the Clerk to the Governors through the School Office
Headteacher			Chair via the Clerk to the Governors through the School Office	Panel of Governors
Individual Governor			Chair via the Clerk to the Governors through the School Office	Panel of Governors
Chair			A suitably skilled Governor will be appointed via the Clerk to the Governors through the School Office	A committee of independent governors
Chair and Vice Chair			An independent Investigator via the Clerk to the Governors through the School Office	A committee of independent governors
Governing Body as a whole			An independent Investigator via the Clerk to the Governors through the School Office	A committee of independent governors

Flowchart of procedure for handling concerns and complaints:



Complaint Campaign

This will be responded to with either:

- sending a template response to all complainants or,
- publishing a single response on the school's website.

Raising Concerns and Complaints Pathway

